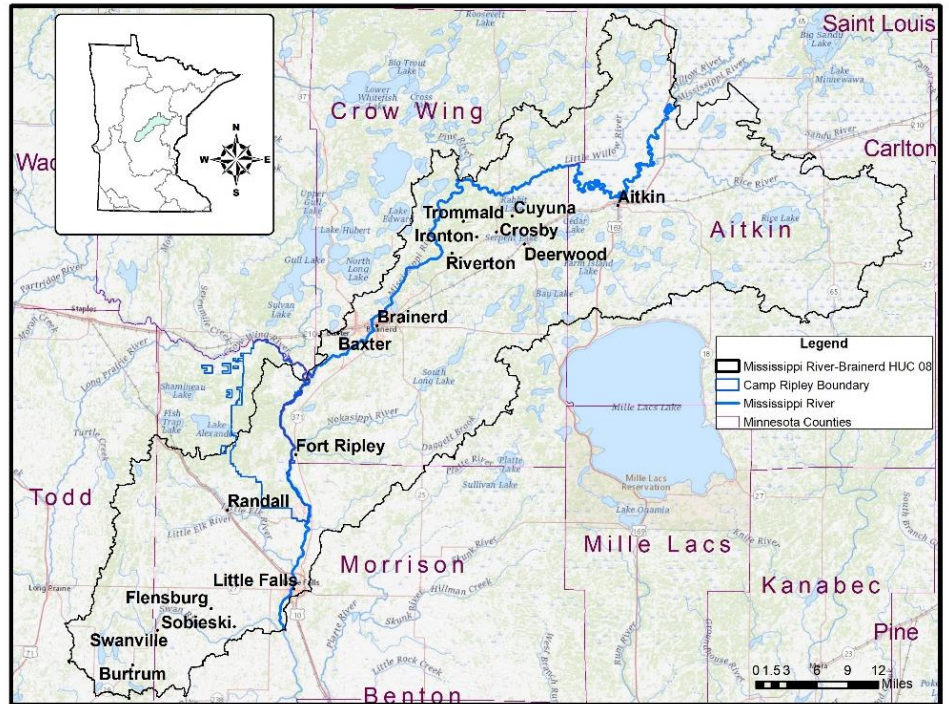


Mississippi River Brainerd Watershed Project Update

June 2020

In 2016, the lakes and streams in the Mississippi River Brainerd Watershed were sampled to determine if they meet state water quality standards. The majority of lakes and streams meet water quality standards but 18 lakes were found to have too many nutrients and 9 streams had E.coli bacteria. The Mississippi River also had higher levels of sediment causing the river to be more turbid. Details about the monitoring can be found at



<https://www.pca.state.mn.us/sites/default/files/wq-ws3-07010104b.pdf> The following draft documents that outline this work will be on public notice from June 1, 2020 to July 1, 2020 and can be found at <https://www.pca.state.mn.us/water/watersheds/mississippi-river-brainerd>.

We have included below, links to articles, videos and other media to provide additional information. If you have any questions, please contact one of the following:

- Aitkin County – Janet Smude smude.aitkinswcd@gmail.com (218) 927-7284
- Crow Wing County – Sheila Boldt sheila.boldt@crowwingswcd.org (218) 828-6197
- Morrison County – Shannon Wettstein shannon.wettstein@morrisonswcd.org (320) 631-3553
- Todd County – Deja Anton deja.anton@co.todd.mn.us (320) 732-2644
- Minnesota Pollution Control Agency – Bonnie Finnerty bonnie.finnerty@state.mn.us 218-316-3897
- Department of Natural Resources – Heidi Lindgren heidi.lindgren@state.mn.us (218) 203-4300

Monitoring Information

The Minnesota Pollution Control Agency (MPCA) monitors lakes and streams throughout the state. If you would like to hear more information about that, the following videos provide a brief overview.

Watershed Monitoring Approach	A 4 minute video about monitoring lakes and streams in Minnesota	https://youtu.be/cGqFO9G6UnA
Biological Monitoring	A 2.5 minute video about how streams are sampled to determine if the fish and bugs are healthy	https://youtu.be/whfK0t3uWk4

Impaired Lakes and Streams Information

If your lake or stream did not meet water quality standards, a special report was prepared to figure out where pollution is coming from and how to improve the water quality. The following presentations provide more information on that process.

<u>Northern Area:</u>	A 25 minute video that discusses the TMDL and water quality issues on the following impaired lakes: Gun Lake, Fleming Lake, Elm Island Lake, Ripple Lake, Lower Mission Lake and Fawn Lake	https://youtu.be/NjZqrDIF2sk
------------------------------	--	---

Central Area:	A 25 minute video that discusses the TMDL and water quality issues on the following impaired lakes: Sebie Lake and Crow Wing Lake	https://youtu.be/ZdCamG8iTBE
Southern Area:	A 25 minute video that discusses the TMDL and water quality issues on the following impaired lakes: Trace Lake and Big Swan Lake	https://youtu.be/Lw4XUsTjLd0

What can YOU do to improve and protect lake and stream water quality?

Everyone has a role to help protect and improve the lakes and streams in your watershed. To find out more about what you can do, take a look at the following resources below.

Next Steps – implementing projects to protect and improve water quality.	A 37 minute presentation on the One Watershed One Plan program that guides planning & funding implementation projects to improve water quality	https://youtu.be/D2-iyYLMMTg
Protecting drinking water: Wells and Septic Systems	A 1 hour and 45 minute webinar from the MN Dept. of Health and the University of MN on private well and septic system management	https://septic.umn.edu/sites/septic.umn.edu/files/drinking_water_final.mp4
Pet waste	This 2 minute video was developed in the Duluth area but the information applies to any area where pet waste can enter waterway through storm drains and runoff.	https://www.perfectduluthday.com/2019/09/05/there-is-no-poop-fairy-psa/
Raingardens – how and why to build a raingarden	A website from the University of MN on raingardens.	https://extension.umn.edu/landscape-design/rain-gardens
Planting for Pollinator Habitat	A website with resources on how to turn part of your lawn into pollinator habitat.	https://bwsr.state.mn.us/residential-pollinator-habitat
Score your shore tool	This website describes the Score Your Shore tool to assess habitat conditions of developed lake lots.	https://www.dnr.state.mn.us/scoreyourshore/index.html
Climate change in Minnesota	A 45 minute presentation on climate change in Minnesota from Kenneth Blumenfeld with the State Climatology Office	http://climateapps.dnr.state.mn.us/2020_Central_MN_SWCD_Climate.mp4

Websites:

Crow Wing SWCD – Videos on Restorations with Coir Logs, Live Fascines, and Soil Wraps
www.youtube.com/user/crowwingswcd/videos

Minnesota DNR – Aquatic Invasive Species
www.dnr.state.mn.us/invasives/ais/contacts.html

Minnesota DNR – Work in Protected Waters
www.dnr.state.mn.us/waters/watermgmt_section/pwpermits/requirements.html

Minnesota Pollution Control Agency – Stormwater Management
www.pca.state.mn.us/water/stormwater-management

[Minnesota Pollution Control Agency - Mississippi River – Brainerd Watershed](http://www.pca.state.mn.us/water/watersheds/mississippi-river-brainerd)
www.pca.state.mn.us/water/watersheds/mississippi-river-brainerd

University of Minnesota Extension Service – Stormwater & Erosion
www.extension.umn.edu/water-resources/stormwater-and-erosion