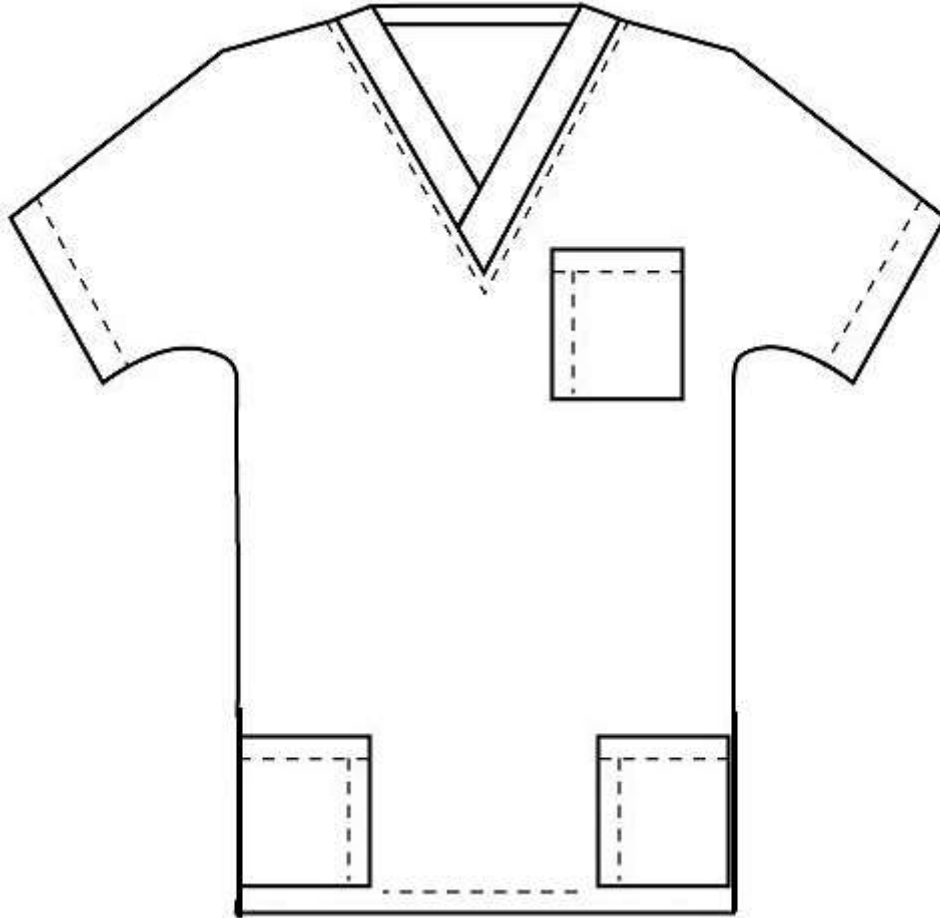


Health Care Worker Scrub Pattern

Scrubs top: utilize a simple t-shirt pattern to create scrubs top of all sizes. Top should include a chest pocket and two side pockets such as the image shown below. Collar in image not required. Scrub top should be made from a broadcloth cotton/polyester blend fabric. Fabric should be less 55% cotton or less in any color.



Scrubs Bottoms: Utilize a pajama bottom type pattern. Side pockets preferred, but not necessary. Drawstring or elastic waist. Scrub bottoms should be made from a broadcloth cotton/polyester blend fabric. Fabric should be less 55% cotton or less in any color.