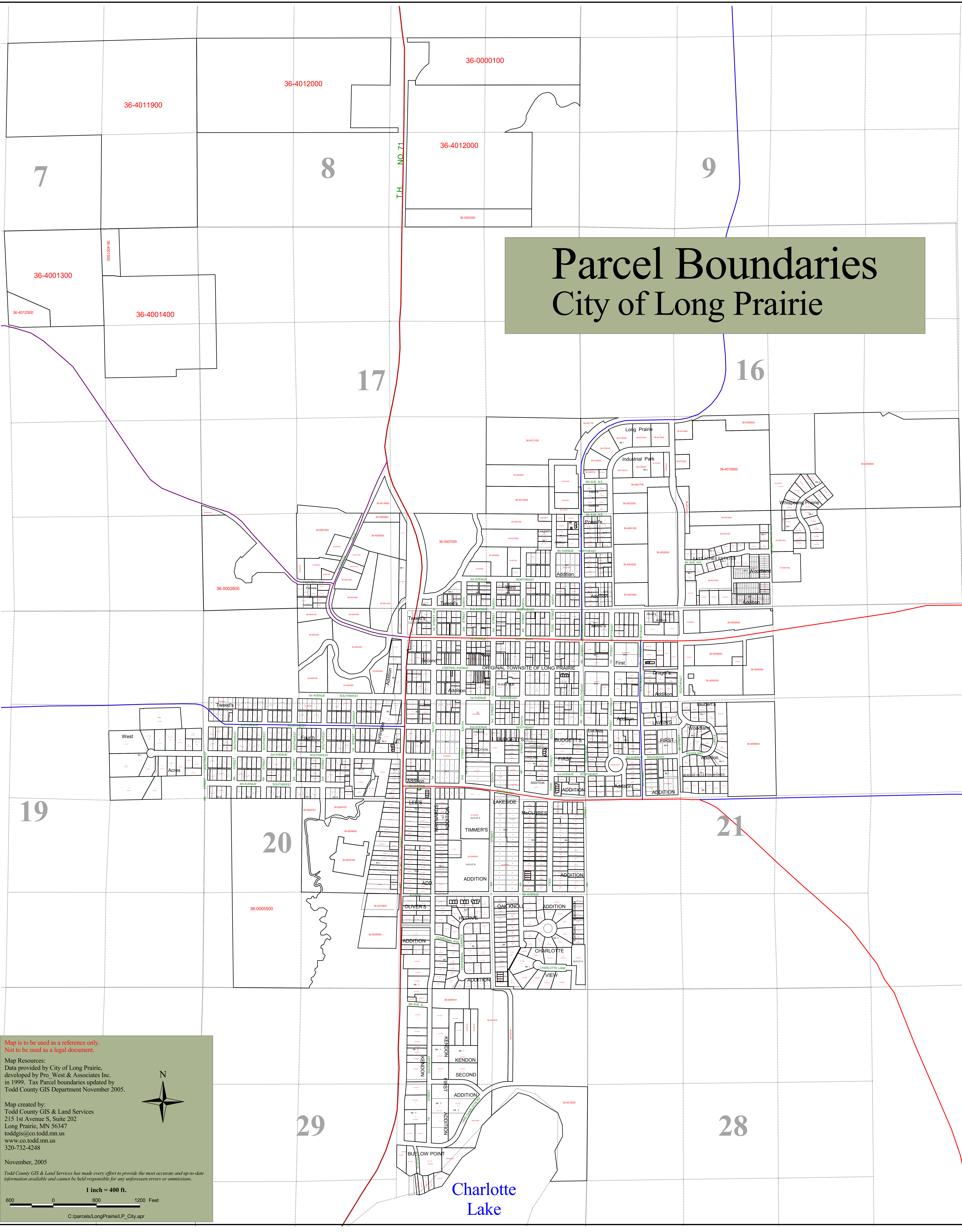


Parcel Boundaries City of Long Prairie



Map is to be used as a reference only.
Not to be used as a legal document.

Map Resources:
Data provided by City of Long Prairie,
developed by Pro West & Associates Inc.
in 1999. Tax Parcel boundaries updated by
Todd County GIS Department November 2005.

Map created by:
Todd County GIS & Land Services
215 1st Avenue S, Suite 202
Long Prairie, MN 56347
toddgis@co.todd.mn.us
www.co.todd.mn.us
320-732-4248

November, 2005

Todd County GIS & Land Services has made every effort to provide the most accurate and up-to-date information available and cannot be held responsible for any unforeseen errors or omissions.

1 inch = 400 ft.

600 0 600 1200 Feet

C:\parcels\LongPrairie\LP_City.apr