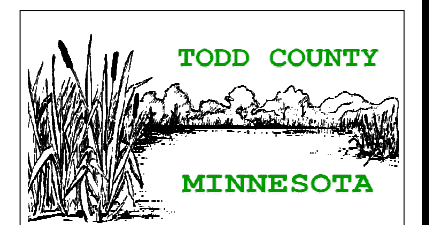


City of Grey Eagle



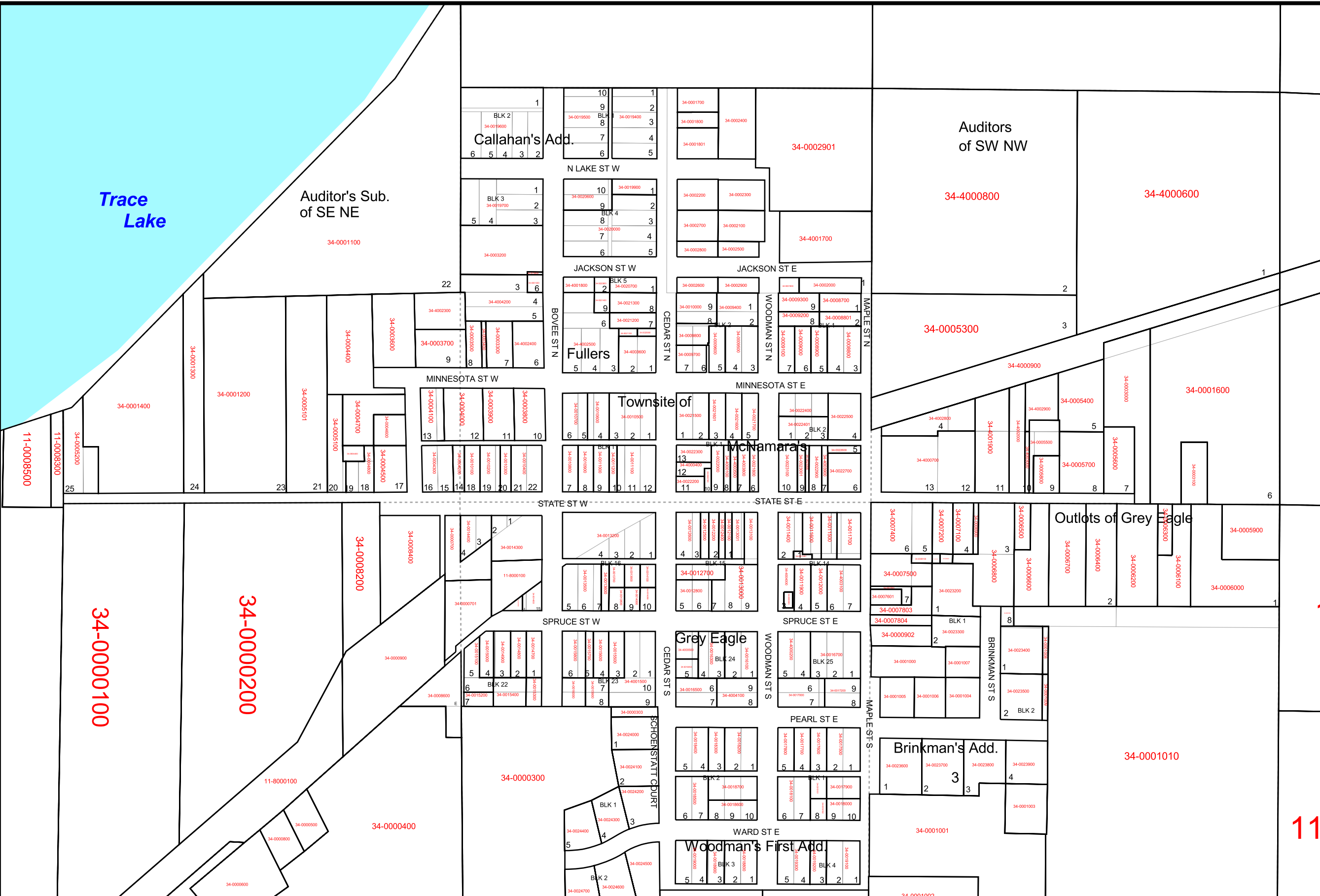
Parcels
 Platted Lots
 PLS Lines

Map Resources:
 Parcels: Todd County GIS & Land Services
 Road Network: Todd County 911/Rural Addressing Basemap
 Utility Information: SEH Engineering



TODD COUNTY GIS DEPARTMENT
 215 FIRST AVENUE SOUTH
 SUITE 202
 LONG PRAIRIE, MN 56347
 OFFICE: (320) 732-4248
 FAX: (320) 732-6345
 E-MAIL: TODDGIS@CO.TODD.MN.US
 APRIL, 2006

Todd County GIS & Land Services has made every effort to provide the most up-to-date information available in this publication and cannot be held responsible for any unforeseen errors.



This Map is a representation of Grey Eagle's Parcels based on interpretation of data available at the Todd County Court house and a limited amount of field collected data. Parcels were developed using Coordinate Geometry where surveys were available. Also referenced 1992 USGS aerial photographs. Collection of section corners data was gathered using sub-meter accuracy.

Map is to be used as a reference only. Not to be used as a legal document.

