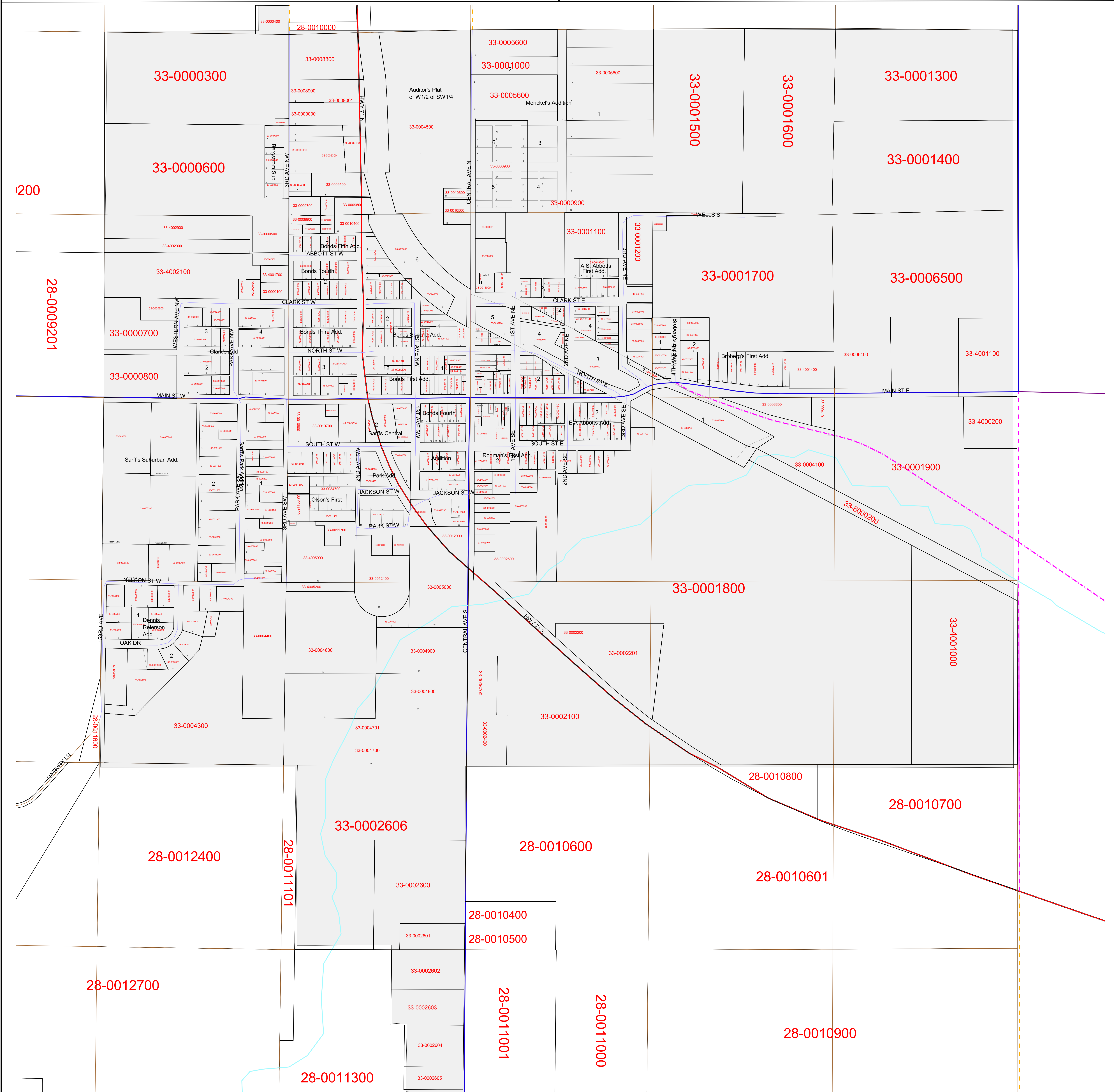
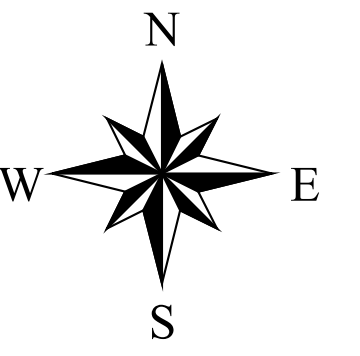


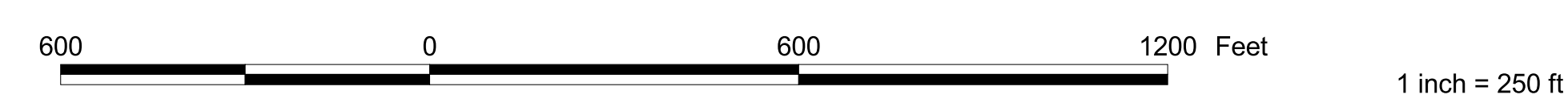
# PARCELS

## CITY OF EAGLE BEND (T13IN R35W)

### TODD COUNTY, MINNESOTA



	Parcels		CSAH-Paved
	Platted Lots		CSAH-Gravel
	PLS Lines		TWP-Paved
<b>Road Network</b>			TWP-Gravel
	US-Paved		TWP-Min. Maint.
	State Highway		Municipal
	County Road-Paved		Private Road
	County Road-Gravel		



This Map is a representation of Grey Eagle's Parcels based on interpretation of data available at the Todd County Court house and a limited amount of field collected data. Parcels were developed using Coordinate Geometry where surveys were available. Also referenced 1992 USGS aerial photographs. Collection of section corners data was gathered using sub-meter accuracy.

Parcels: Todd County GIS Department  
 Road Network: Todd County 911/Rural Addressing Basemap

Map is to be used as a reference only. Not to be used as a legal document.

The Todd County GIS Department has made every effort to provide the most up-to-date information available in this publication and cannot be held responsible for any unforeseen errors.

TODD COUNTY GIS DEPARTMENT  
 215 FIRST AVENUE SOUTH  
 SUITE 202  
 LONG PRAIRIE, MN 56347  
 OFFICE: (320) 732-4248  
 FAX: (320) 732-6345  
 E-MAIL: TODDGIS@CO.TODD.MN.US  
 APRIL, 2003

