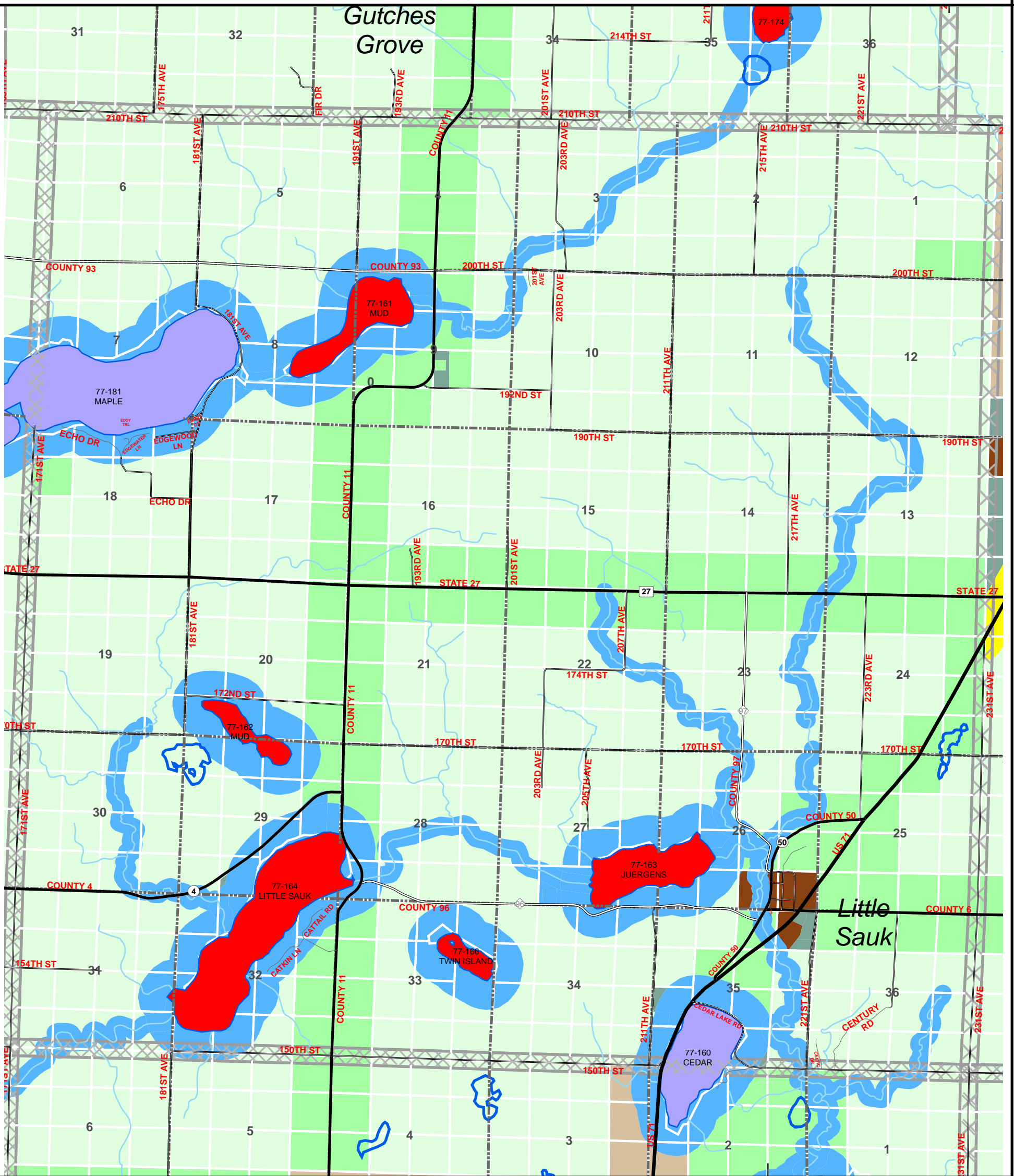
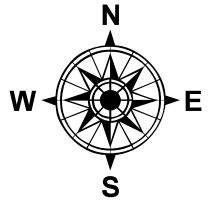


TOWNSHIP NAME: LITTLE SAUK

T128N

R34 W

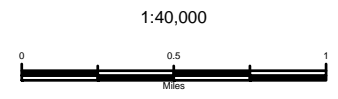
TODD COUNTY ZONING



Legend

- |   |  |                          |
|---|--|--------------------------|
| (AF-1) Agriculture/Forestry - 1             | (RT) Rural Townsite                    | General Development      |
| (AF-1-OL) Agriculture/Forestry - 1 - Outlot | (C) Commercial                         | Natural Environment      |
| (AF-2) Agriculture/Forestry - 2             | (LMI) Limited Manufacturing/Industry   | Recreational Development |
| (R-10) Residential - 10                     | (S) Shoreland                          | Section Line             |
| (R-2) Residential - 2                       | (M) Municipality                       | City Boundary            |
| (UG) Urban Growth                           | (RDL) Recreational Development Limited | Township Boundary        |

Zoning information provided by Todd County Planning & Zoning Department.



**TODD COUNTY**  
 WHERE THE FOREST MEETS THE PRAIRIE  
 EST. 1855

GIS & Land Services  
 215 1st Ave S - Suite 202  
 Long Prairie, MN 56347  
 (phone) 320-732-4248  
 (fax) 320-732-6345  
 www.co.todd.mn.us/gis/gis.htm

The Todd County GIS & Land Services Department has made every effort to provide the most accurate and up-to-date information available in this publication and cannot be held responsible for any unforeseen errors or omissions.

Jun 02, 2008