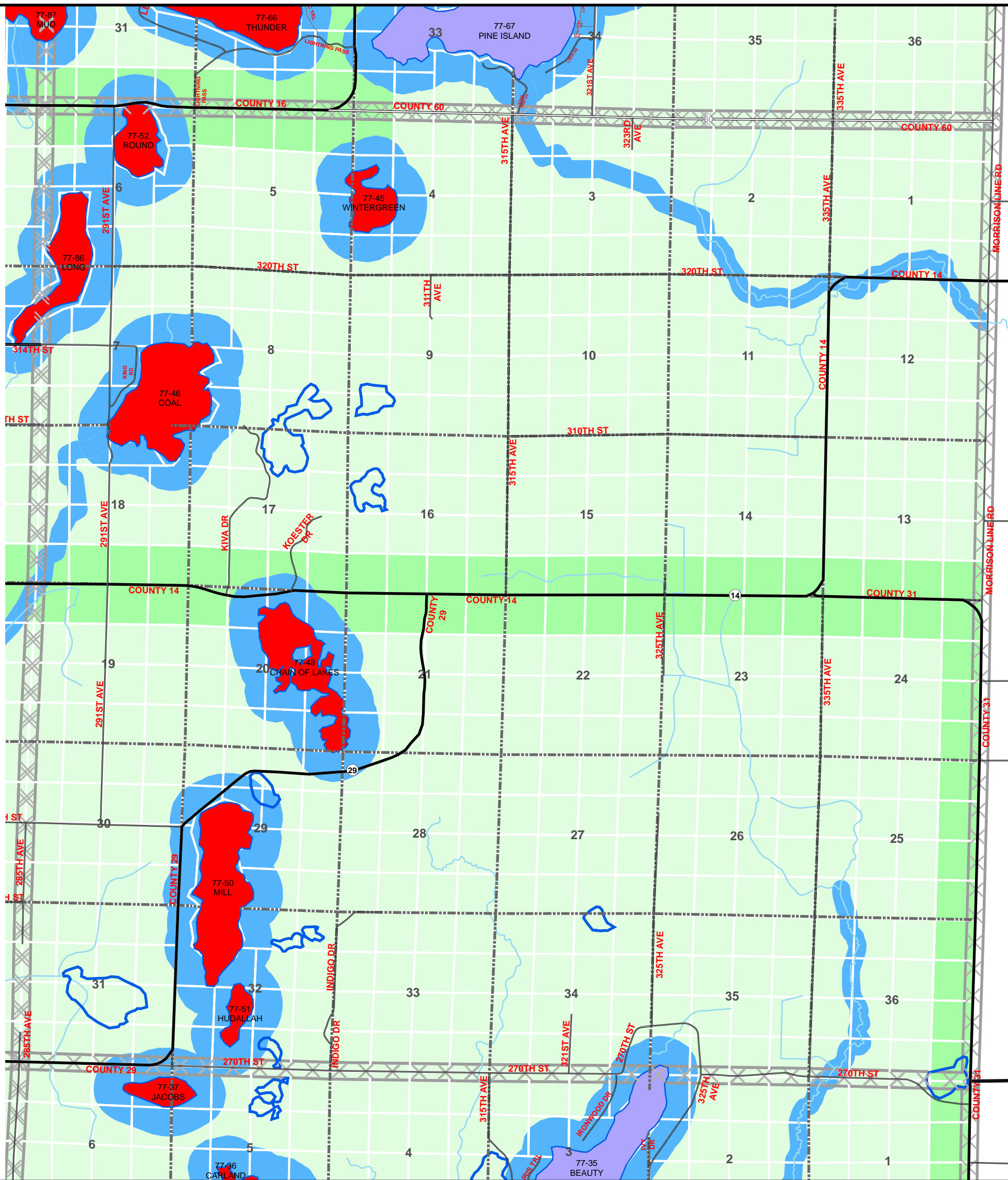
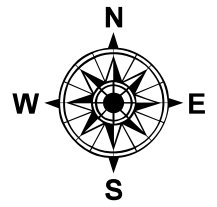


TOWNSHIP NAME: LITTLE ELK

T130N

R32 W

TODD COUNTY ZONING

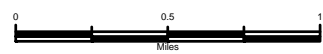


Legend

- |   |  |                          |
|---|--|--------------------------|
| (AF-1) Agriculture/Forestry - 1             | (RT) Rural Townsite                    | General Development      |
| (AF-1-OL) Agriculture/Forestry - 1 - Outlot | (C) Commercial                         | Natural Environment      |
| (AF-2) Agriculture/Forestry - 2             | (LMI) Limited Manufacturing/Industry   | Recreational Development |
| (R-10) Residential - 10                     | (S) Shoreland                          | Section Line             |
| (R-2) Residential - 2                       | (M) Municipality                       | City Boundary            |
| (UG) Urban Growth                           | (RDL) Recreational Development Limited | Township Boundary        |

Zoning information provided by Todd County Planning & Zoning Department.

1:40,000



GIS & Land Services  
215 1st AVE S - Suite 202  
Long Prairie, MN 56347  
(phone) 320-732-4248  
(fax) 320-732-6345  
www.co.todd.mn.us/gis/gis.htm

The Todd County GIS & Land Services Department has made every effort to provide the most accurate and up-to-date information available in this publication and cannot be held responsible for any unforeseen errors or omissions.

Aug 08, 2006